

UN Office for the Coordination of Humanitarian Affairs
West Bank Closures - Tulkarm
 October 2006

TULKARM CLOSURES	
Checkpoints	4
Partial Checkpoints	0
Roadblocks	3
Road Gates	1
Earth Mounds	10
Earth Walls	1,000 m - 2
Trenches	0
Road Barriers	1,800 m - 2
TOTAL	22

Access

Closed and Restricted Areas

- Israeli military base (Access is prohibited)
- Israeli closed military area (Access is prohibited)
- Existing and projected 'closed areas' behind the Barrier (Access is limited to permit holders)

Israeli Settlements

- Outpost
- Land cultivated by settlers
- Settlement municipal area
- Settlement built-up and outer limit

Palestinian Areas

- Built-up

Roads

- Prohibited or Restricted Palestinian vehicle use
- Main road
- Other Road

Oslo Agreement

- Area A¹
- Area B²
- Special Case (H2)³
- Intended Nature Reserve
- Area C⁴

Physical Closures

- Checkpoint
- Partial Checkpoint
- Agricultural Gate¹
- Road Gate
- Observation Tower
- Earthmound
- Roadblock
- Tunnel
- Planned Tunnel
- Earth Wall
- Road Barrier
- Trench

West Bank Barrier

- Constructed
- Under Construction
- Planned Route

Planned Barrier: path based on Israeli Government map, published April 30 2006 and IDF land seizure orders. (Ministry of Defence - Seam Zone Authority)

Constructed Barrier - path extracted from satellite imagery and verified by field survey as of May 2006.

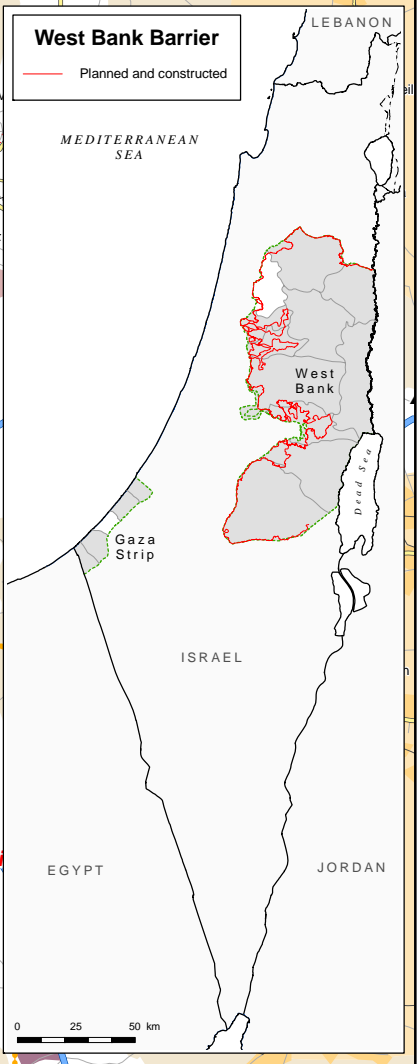
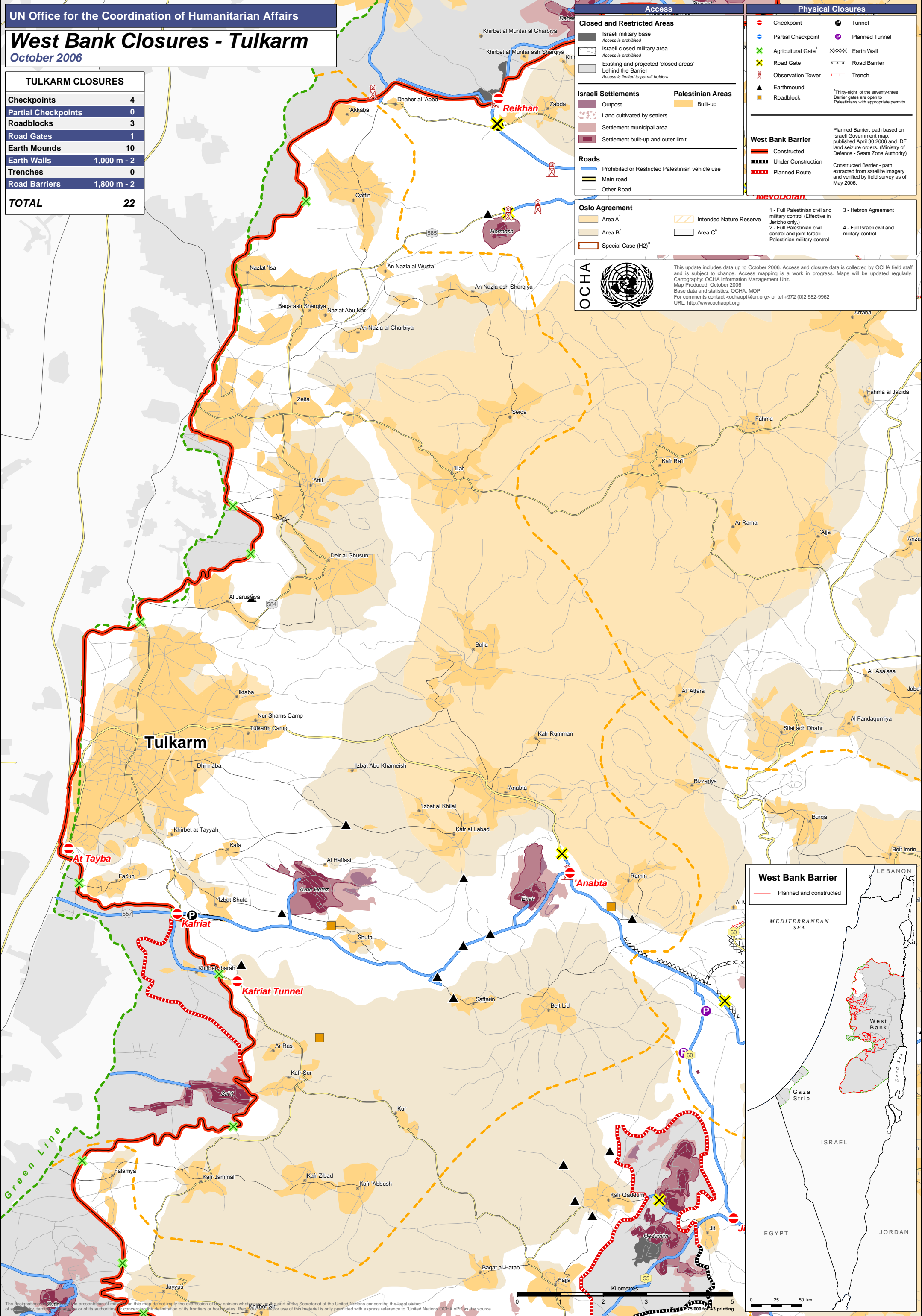
Thirty-eight of the seventy-three Barrier gates are open to Palestinians with appropriate permits.

MEVDODATI

- 1 - Full Palestinian civil and military control (Effective in Jericho only.)
- 2 - Full Palestinian civil control and joint Israeli-Palestinian military control
- 3 - Hebron Agreement
- 4 - Full Israeli civil and military control

OCHA

This update includes data up to October 2006. Access and closure data is collected by OCHA field staff and is subject to change. Access mapping is a work in progress. Maps will be updated regularly.
 Cartography: OCHA Information Management Unit.
 Map Produced: October 2006
 Base data and statistics: OCHA, MOP
 For comments contact <ochaopt@un.org> or tel +972 (0)2 582-9962
 URL: <http://www.ochaopt.org>



The designations and the presentation of material on this map do not imply the expression of any opinion whatsoever on the part of the Secretariat of the United Nations concerning the legal status of any territory, territory, or of its authorities, or concerning the delimitation of its frontiers or boundaries. Reproduction or use of this material is only permitted with express reference to United Nations OCHA as the source.