

# West Bank Closures - Tulkarm

March 2007

TULKARM CLOSURES	
Checkpoints	4
Partial Checkpoints	0
Roadblocks	2
Road Gates	2
Earth Mounds	10
Earth Walls	800 m - 2
Trenches	0
Road Barriers	1,800 m - 2
<b>TOTAL</b>	<b>22</b>

### Access

**Closed and Restricted Areas**

- Israeli military base  
Access is prohibited
- Israeli closed military area  
Access is prohibited
- Existing and projected 'closed areas' behind the Barrier  
Access is limited to permit holders

**Israeli Settlements**

- Outpost
- Land cultivated by settlers
- Settlement municipal area
- Settlement built-up and outer limit

**Roads**

- Prohibited or Restricted Palestinian vehicle use
- Main road
- Other Road

### Physical Closures

- Checkpoint
- Partial Checkpoint
- Road Gate
- Observation Tower
- Earthmound
- Roadblock
- Tunnel
- Planned Tunnel
- Earth Wall
- Road Barrier
- Trench

**West Bank Barrier**

- Constructed
- Under Construction
- Planned Route
- Agricultural Gate<sup>1</sup>
- Military Gate<sup>2</sup>

<sup>1</sup>Forty-five of the eighty-four Barrier gates are open to Palestinians with appropriate permits.  
<sup>2</sup>Planned Barrier: path based on Israeli Government map, published April 30 2006 and IDF land seizure orders. (Ministry of Defence - Seam Zone Authority)  
Constructed Barrier - path extracted from satellite imagery and verified by field survey as of May 2006.

### Oslo Agreement

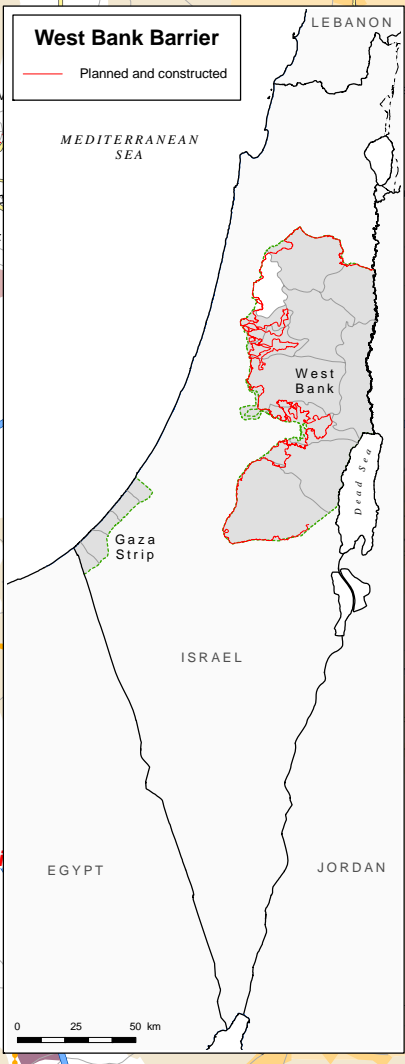
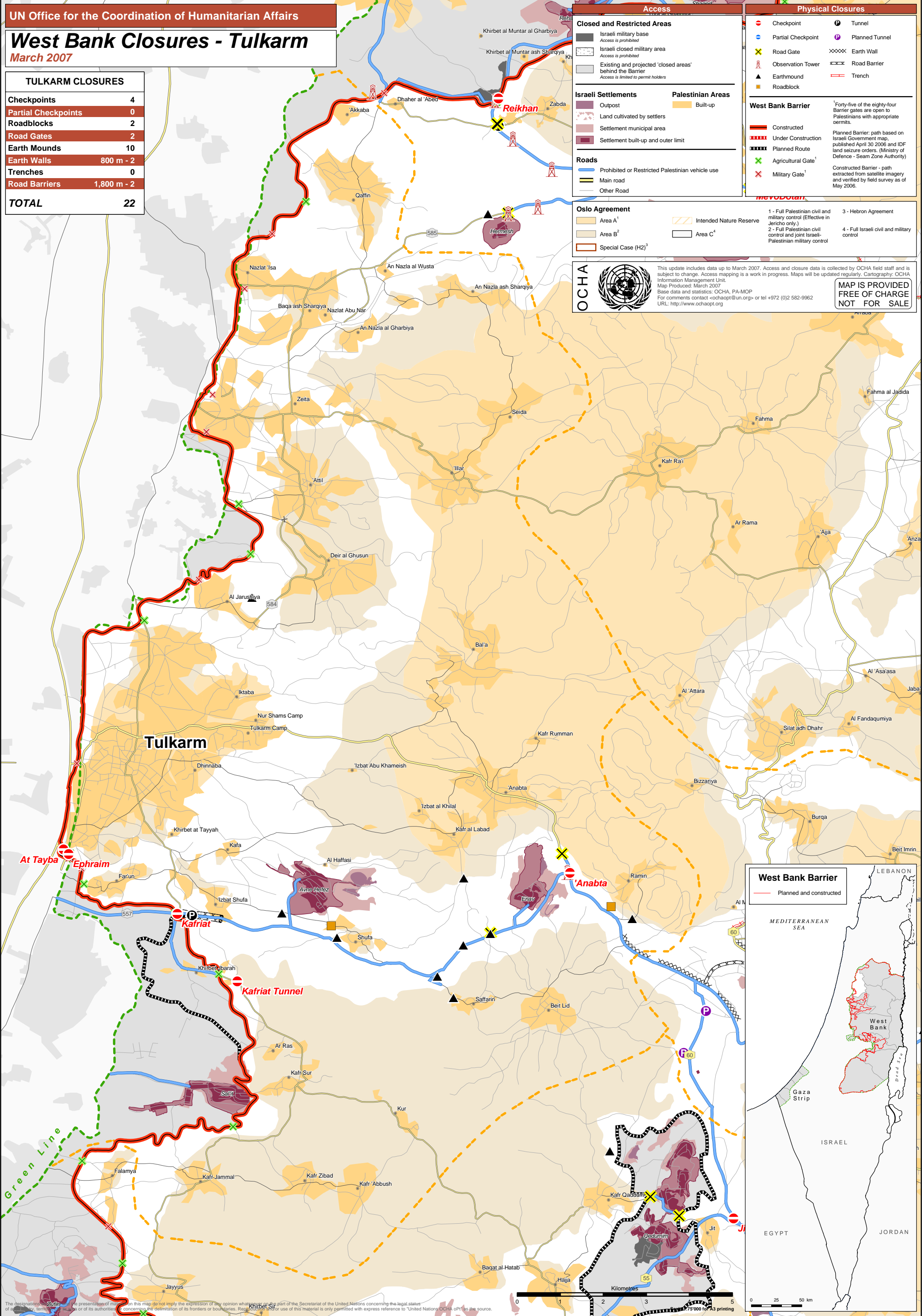
Area A <sup>1</sup>	Intended Nature Reserve	3 - Hebron Agreement
Area B <sup>2</sup>	Area C <sup>4</sup>	4 - Full Israeli civil and military control
Special Case (H2) <sup>3</sup>		

<sup>1</sup> - Full Palestinian civil and military control (Effective in Jericho only.)  
<sup>2</sup> - Full Palestinian civil control and joint Israeli-Palestinian military control

**OCHA**

This update includes data up to March 2007. Access and closure data is collected by OCHA field staff and is subject to change. Access mapping is a work in progress. Maps will be updated regularly. Cartography: OCHA Information Management Unit.  
Map Produced: March 2007  
Base data and statistics: OCHA, PA-MOP  
For comments contact <ochaopt@un.org> or tel +972 (0)2 582-9962  
URL: <http://www.ochaopt.org>

**MAP IS PROVIDED FREE OF CHARGE NOT FOR SALE**



The designations and the presentation of material on this map do not imply the expression of any opinion whatsoever on the part of the Secretariat of the United Nations concerning the legal status of any territory, territory, or area or of its authorities, or concerning the delimitation of its frontiers or boundaries. Reproduction or use of this material is only permitted with express reference to "United Nations OCHA oPt" as the source.