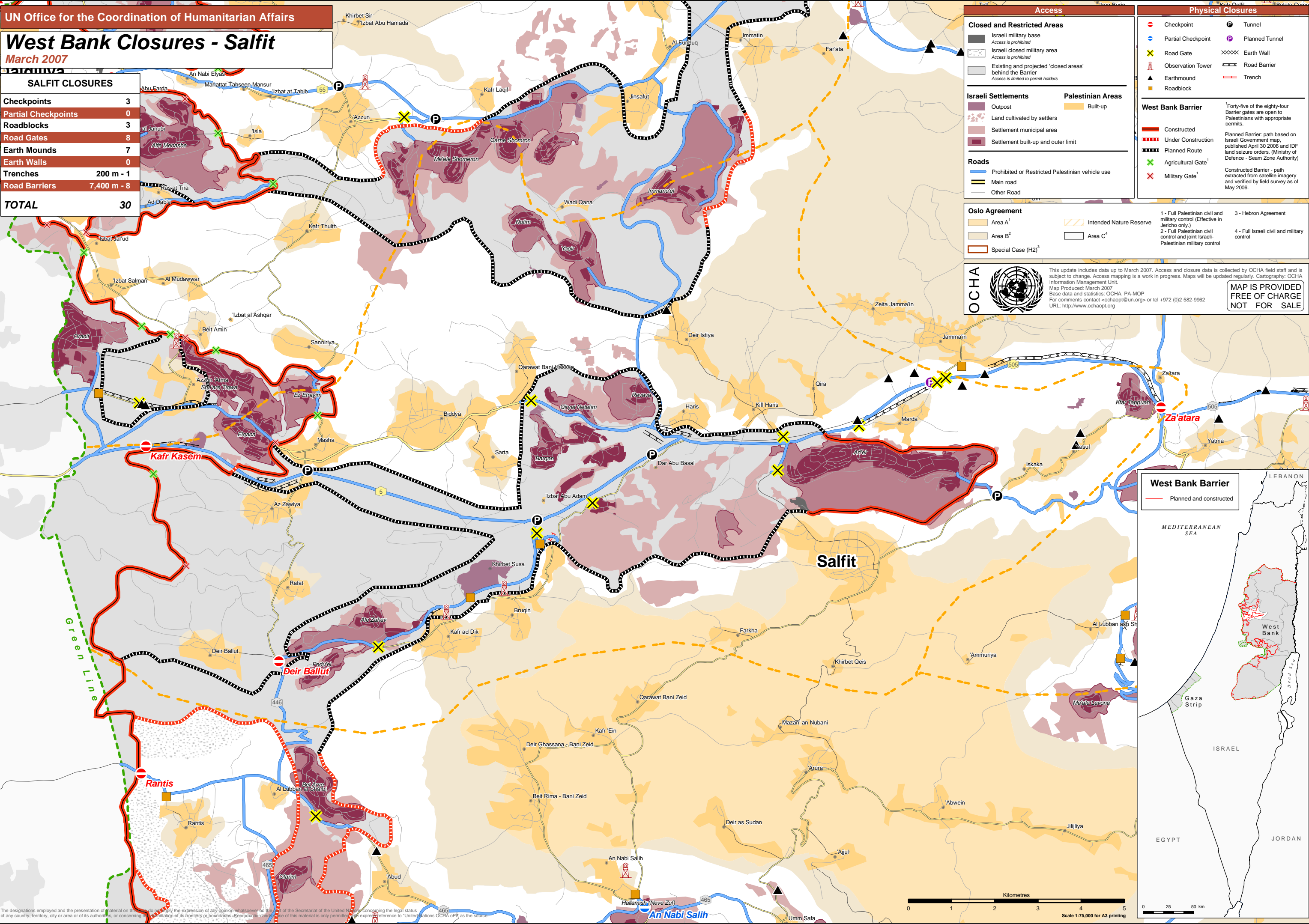


# West Bank Closures - Salfit

March 2007

SALFIT CLOSURES	
Checkpoints	3
Partial Checkpoints	0
Roadblocks	3
Road Gates	8
Earth Mounds	7
Earth Walls	0
Trenches	200 m - 1
Road Barriers	7,400 m - 8
<b>TOTAL</b>	<b>30</b>



### Access

**Closed and Restricted Areas**

- Israeli military base  
Access is prohibited
- Israeli closed military area  
Access is prohibited
- Existing and projected 'closed areas' behind the Barrier  
Access is limited to permit holders

**Israeli Settlements**

- Outpost
- Land cultivated by settlers
- Settlement municipal area
- Settlement built-up and outer limit

**Palestinian Areas**

- Built-up

**Roads**

- Prohibited or Restricted Palestinian vehicle use
- Main road
- Other Road

### Physical Closures

- Checkpoint
- Partial Checkpoint
- Road Gate
- Observation Tower
- Earthmound
- Roadblock
- Tunnel
- Planned Tunnel
- Earth Wall
- Road Barrier
- Trench

**West Bank Barrier**

- Constructed
- Under Construction
- Planned Route
- Agricultural Gate<sup>1</sup>
- Military Gate<sup>1</sup>

<sup>1</sup>Forty-five of the eighty-four Barrier gates are open to Palestinians with appropriate permits.  
Planned Barrier - path based on Israeli Government map, published April 30 2006 and IDF land seizure orders. (Ministry of Defence - Seam Zone Authority)  
Constructed Barrier - path extracted from satellite imagery and verified by field survey as of May 2006.

### Oslo Agreement

- Area A<sup>1</sup>
- Area B<sup>2</sup>
- Special Case (H2)<sup>3</sup>
- Intended Nature Reserve
- Area C<sup>4</sup>

**OCHA**

This update includes data up to March 2007. Access and closure data is collected by OCHA field staff and is subject to change. Access mapping is a work in progress. Maps will be updated regularly. Cartography: OCHA Information Management Unit.  
Map Produced: March 2007  
Base data and statistics: OCHA, PA-MOP  
For comments contact <ochaopt@un.org> or tel +972 (0)2 582-9962  
URL: <http://www.ochaopt.org>

1 - Full Palestinian civil and military control (Effective in Jericho only.)  
2 - Full Palestinian civil control and joint Israeli-Palestinian military control  
3 - Hebron Agreement  
4 - Full Israeli civil and military control

**MAP IS PROVIDED FREE OF CHARGE NOT FOR SALE**

### West Bank Barrier

- Planned and constructed

Scale 1:75,000 for A3 printing

The designations employed and the presentation of material on this map do not imply the expression of any opinion whatsoever on the part of the Secretariat of the United Nations concerning the legal status of any country, territory, city or area or of its authorities, or concerning the delimitation of its frontiers or boundaries. Reproduction and use of this material is only permitted with express reference to "United Nations OCHA opt" as the source.